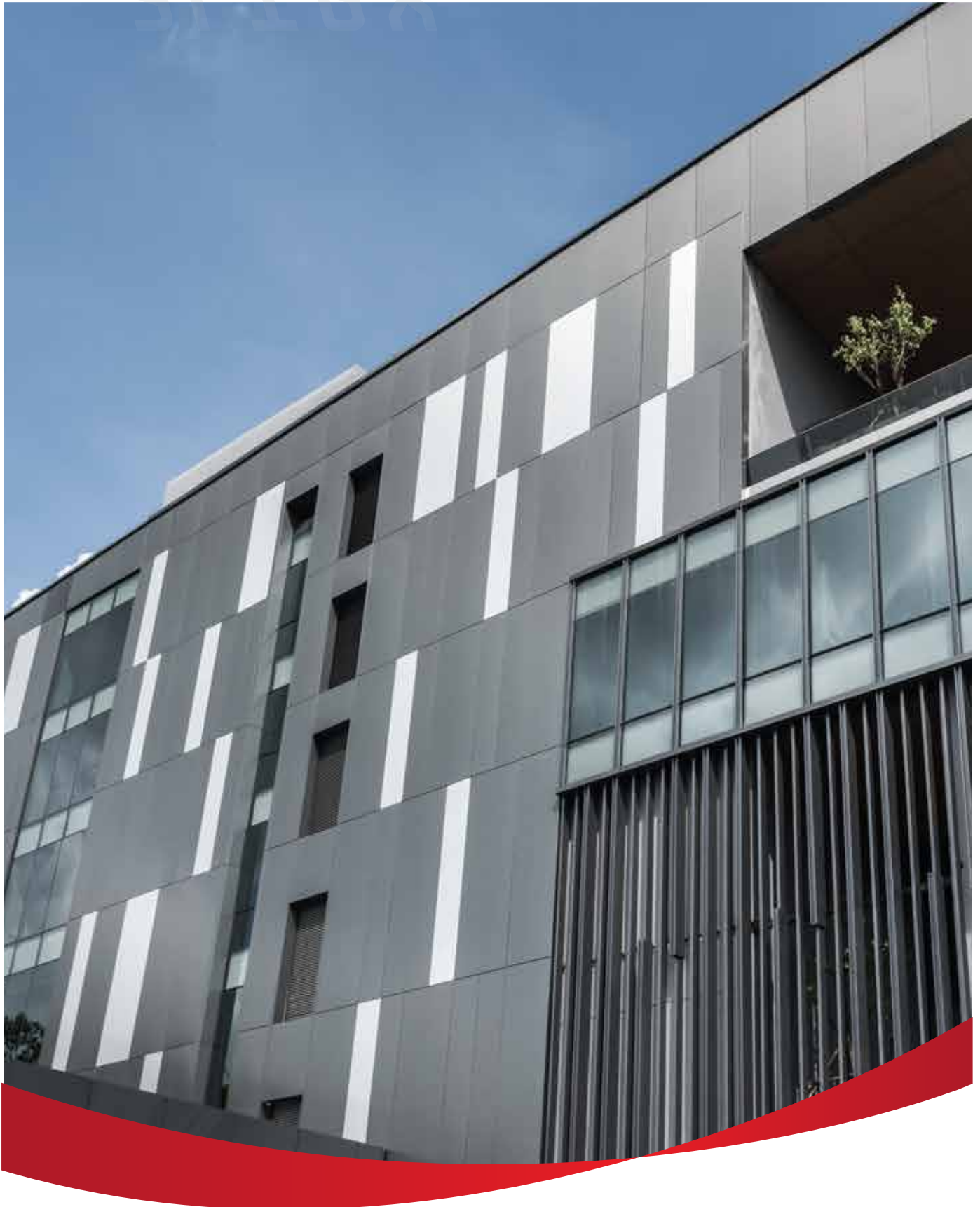




GREAT VALUE
GREAT QUALITY



THE ART OF CLADDING REFLECTING YOUR INNOVATION

Metallic COLOR



*MA 001



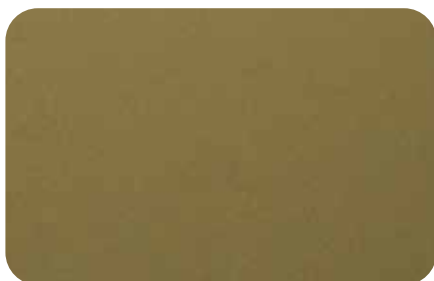
*MA 002



*MA 004



MA 011



MA 012



MA 014



MA 021



MA 022



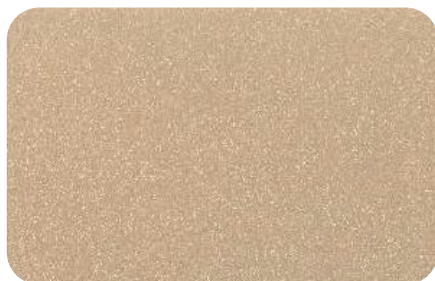
MA 031



MA 032



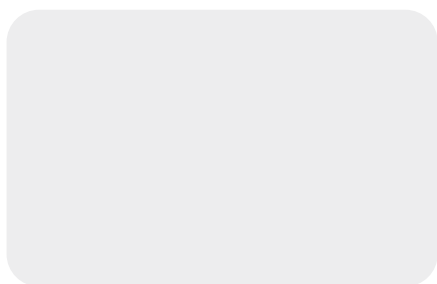
MA 033



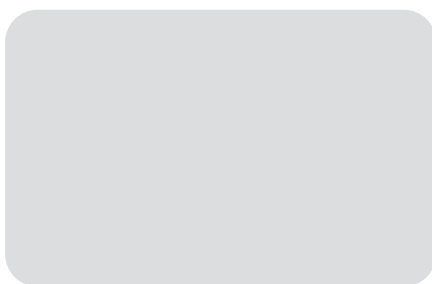
MA 034

*STANDARD STOCK ALTEX 403

Solid COLOR



*SA 001



SA 002



SA 003



SA 004



SA 011



SA 012



SA 013



SA 014



SA 021



SA 022



SA 023



SA 024



SA 025



SA 026



SA 027

VIVID & WOOD COLOR



VS 003



VS 004



VS 011



VS 012



VS 021



VS 022



VF 013



VF 031



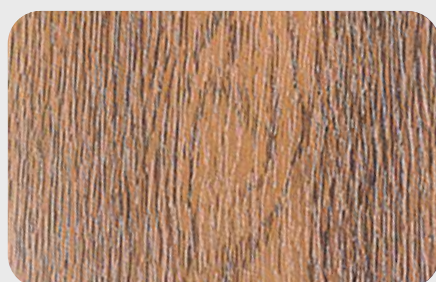
VF 041



VF 052



TB 001



TB 002



ALTEX 405

Specification

- 4.0 mm. thk. Aluminium Composite Panel consisting of
 - : 0.5 mm. thk. Aluminium Front side skin with PVDF Coat
 - : 0.5 mm. thk. Aluminium Back side skin with Polyester Coat
 - : 3.0 mm. thk. Black Polyethelene Core

Application

- : Wall paneling for High-Rise and Big Buildings

Warranty

- : 10 Years *

* Details of Terms and Reliabilities are in the certificate of Warranty

ALTEX 403

Specification

- : 4.0 mm. thk. Aluminium Composite Panel consisting of
 - : 0.3 mm. thk. Aluminium Front side skin with High Performance Coat
 - : 0.3 mm. thk. Aluminium Back side skin with Polyester Coat
 - : 3.4 mm. thk. Black Polyethelene Core

Application

- : Wall paneling for Medium and small size Offices and Commercial Buildings

Warranty

- : 10 Years *

* Details of Terms and Reliabilities are in the certificate of Warranty





COMPOSITE PANEL | SOLID SHEET CLADDINGS | ARCHITECTURAL LOUVERS | CEILING SYSTEMS | TEXTILE ARCHITECTURE | SMART ARCHITECTURE

www.fameline.com

View our latest products and offers by following us on



35/11 Kanchanapisek rd.
Dokmai, Prawet
Bangkok 10250

Tel. : [+66]2 365 5899
Fax : [+66]2 365 5890
Email : info@fameline.com

